

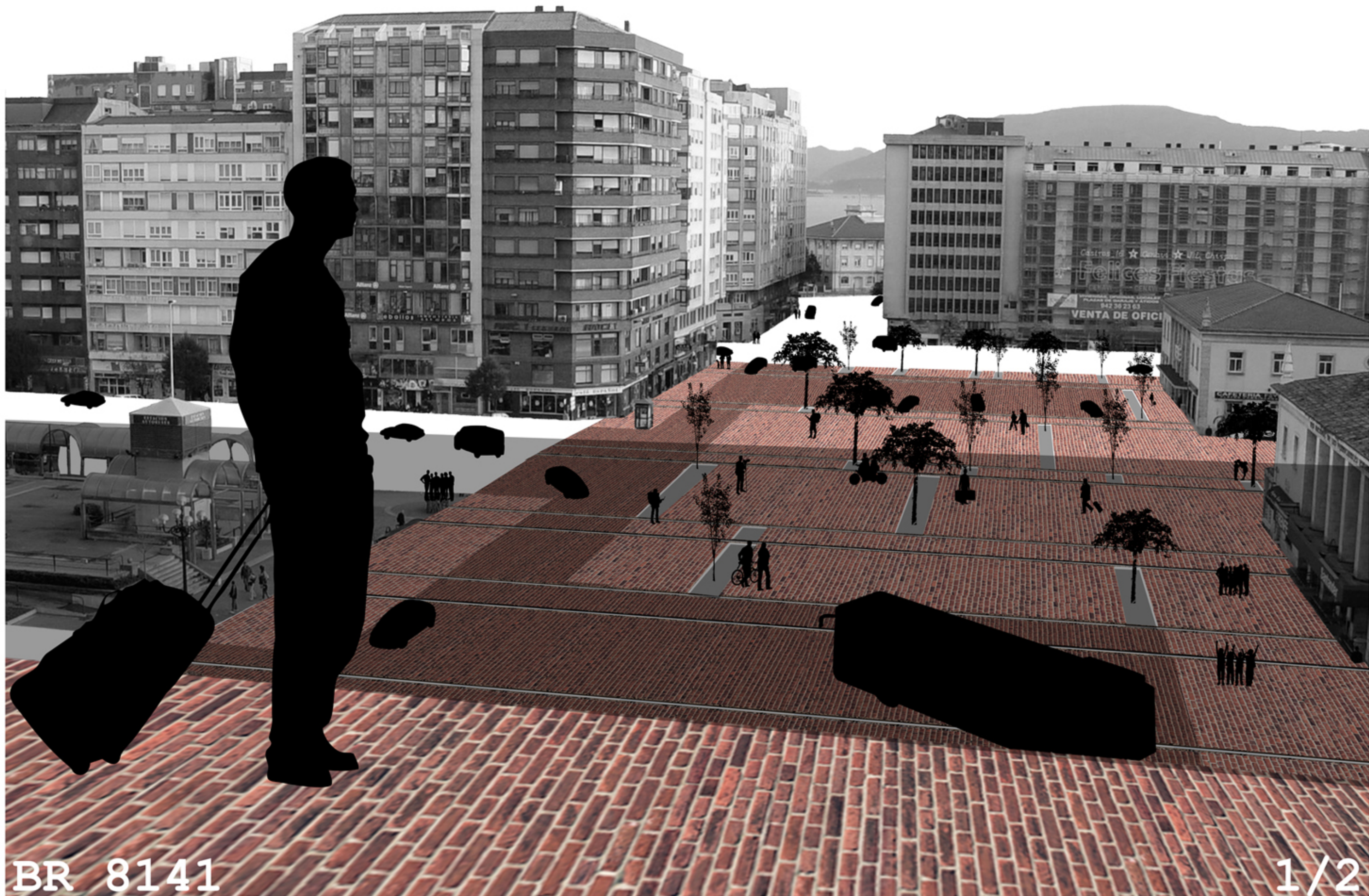
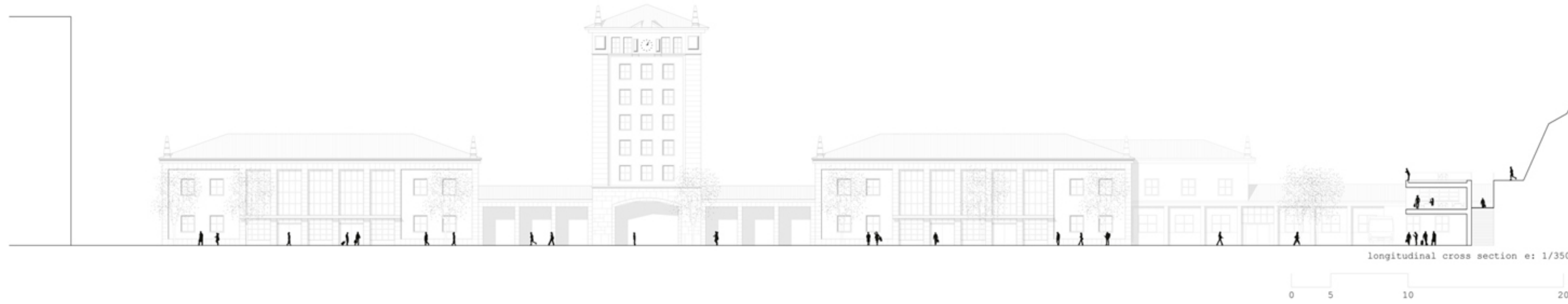
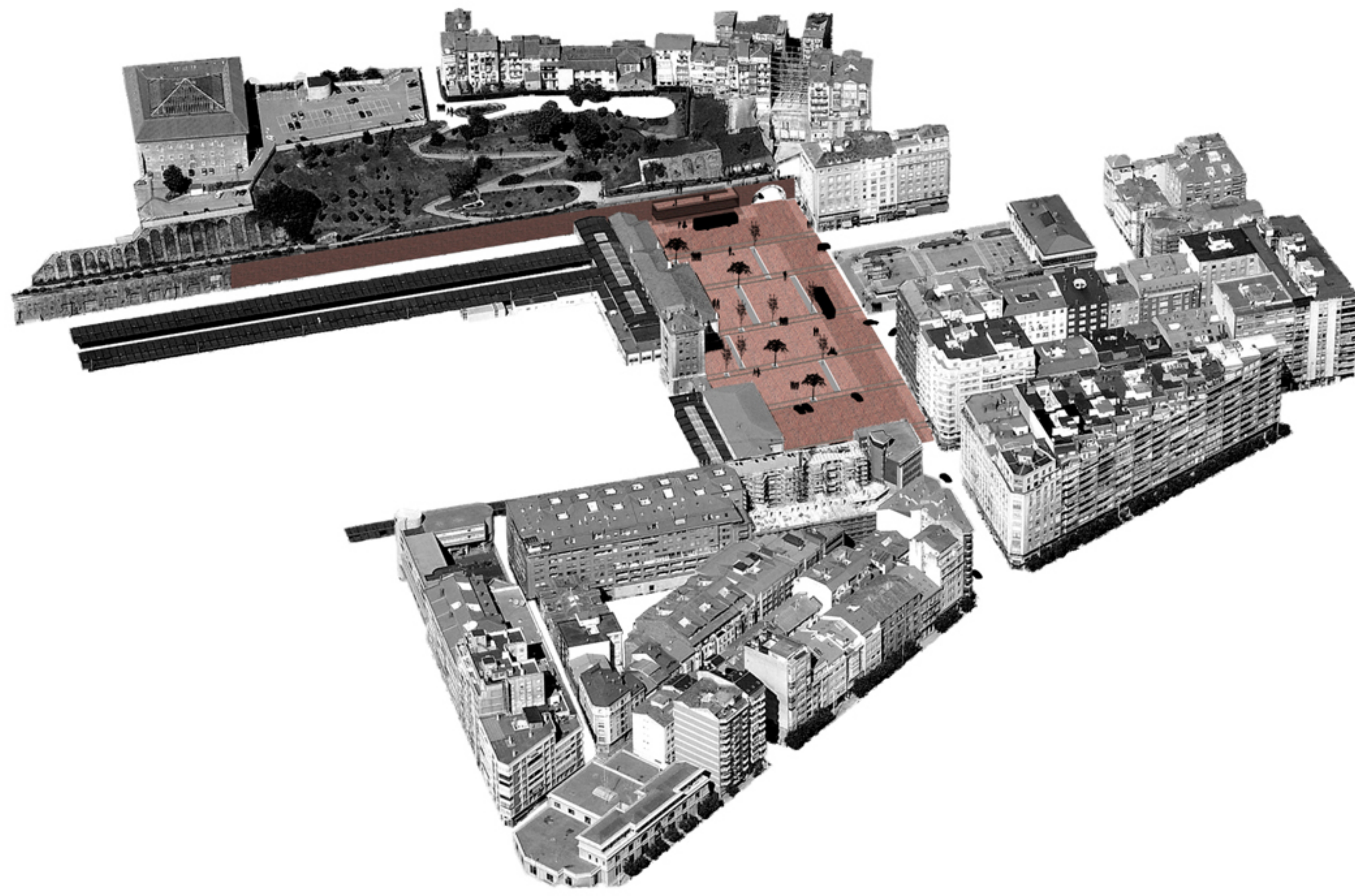
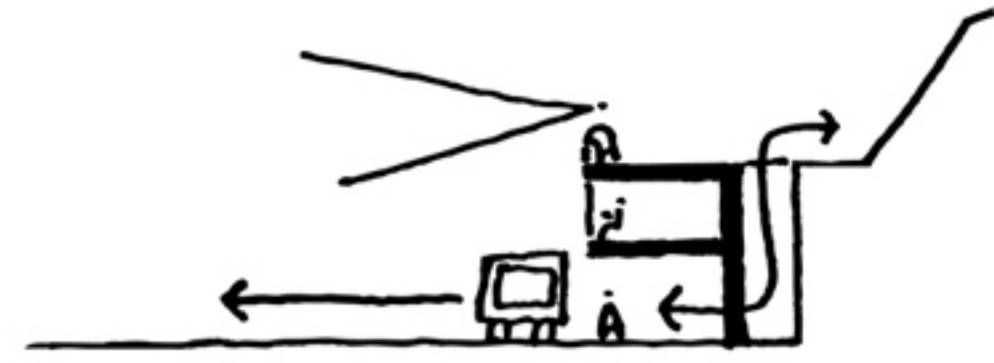
# CÁTEDRA HISPALYT

## V COMPETITION

The square presents itself with a vast space surrounded by buildings of different scales. The tower of the train station becomes a constant visual reference in the square as well as it emphasizes the symmetry of the train station's design. The wall on the north-west side configures a 'cul-de-sac' for the square while the park at a higher level lacks of continuity with the lower level.

Thus, the building is situated on the far end at the north-west of the square. With a simple strategy the intervention becomes 4 things at the same time: it is a **fourth elevation** completing the square while its urban scale does not compete with the train station; it creates a **direct connection** to the park; it becomes a **viewpoint** over the square; and the cafeteria is the **bus stop itself**.

The 'cul-de-sac' no longer exists. There is a **continuity** between the park and the square giving the city more **flexibility**. The cafeteria is elevated to create a space below destined for the bus stop. At the same time, its roof is used as a viewpoint over the square as well as the terrace of the cafeteria. The user becomes a mere viewer of the hectic activity of the square.



BR 8141

1/2

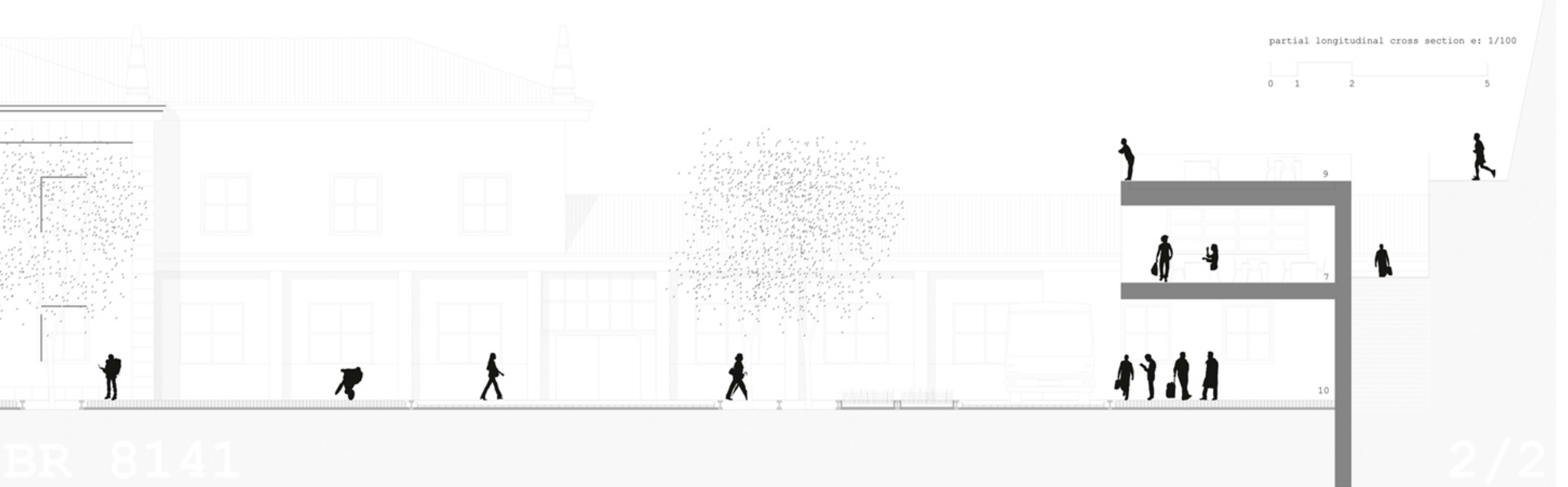
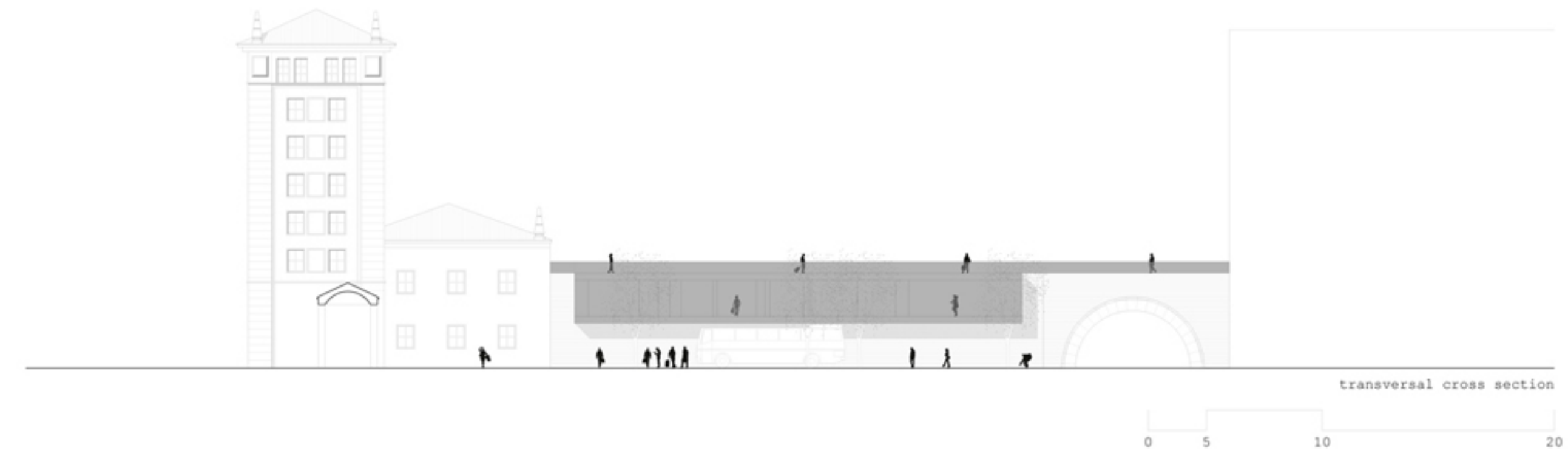
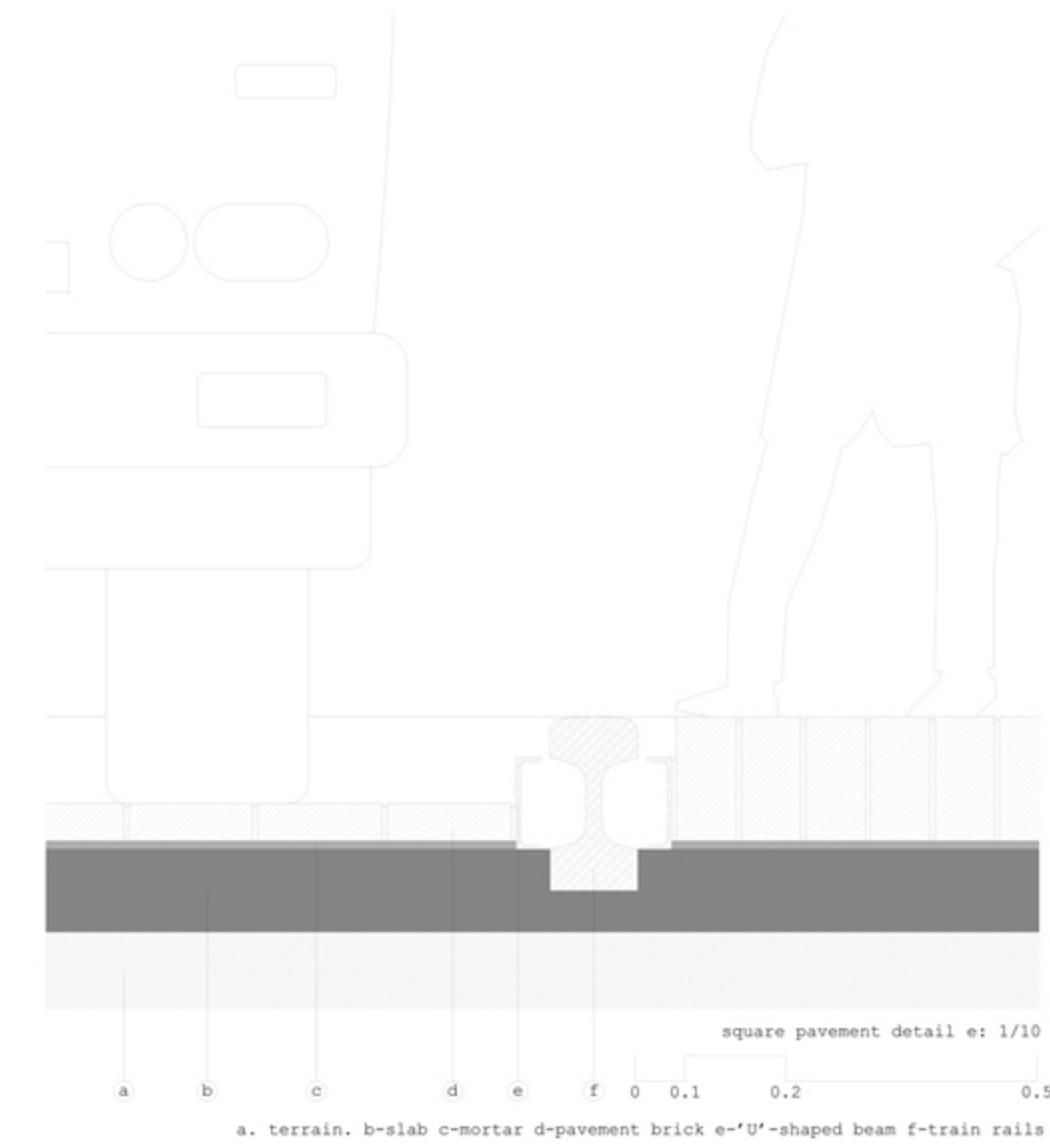
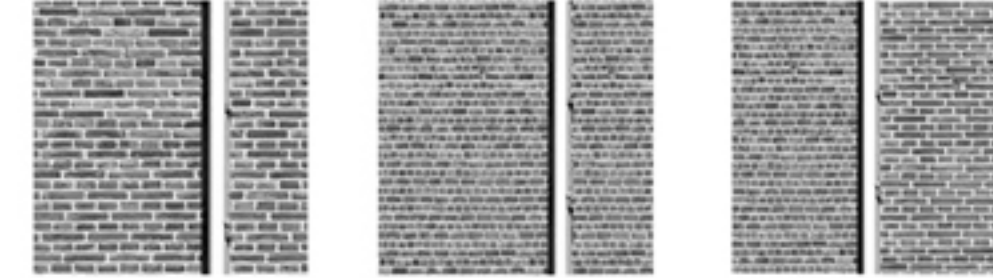
# CÁTEDRA HISPALYT

## V COMPETITION

The pavement deals with the **dialog** between the **train tracks** and the **ceramic brick**. Nowadays, train tracks are being replaced by more developed and modern ones leaving behind tones of steel with the unique shape of a rail.

The square resolves its different uses just by changing the pavement. **Train rails** are alternately being used with the **brick** to separate the uses along the square. One brick is placed in two different ways: with its short side up and with its long side up. This allows, specially, to differentiate between the pedestrians and the vehicles.

The square becomes a reference and an **attraction** focus of Santander since it is now connected to the park through the use of the brick as a **pavement** which is emphasized by the viewpoint of the cafeteria.



BR 8141

2/2

- floor plan e: 1/100
- 1.- office
  - 2.- toilets
  - 3.- access
  - 4.- storage room
  - 5.- cellar
  - 6.- kitchen
  - 7.- cafe / summer terrace
  - 8.- playground
  - 9.- winter terrace
  - 10.- bus atop