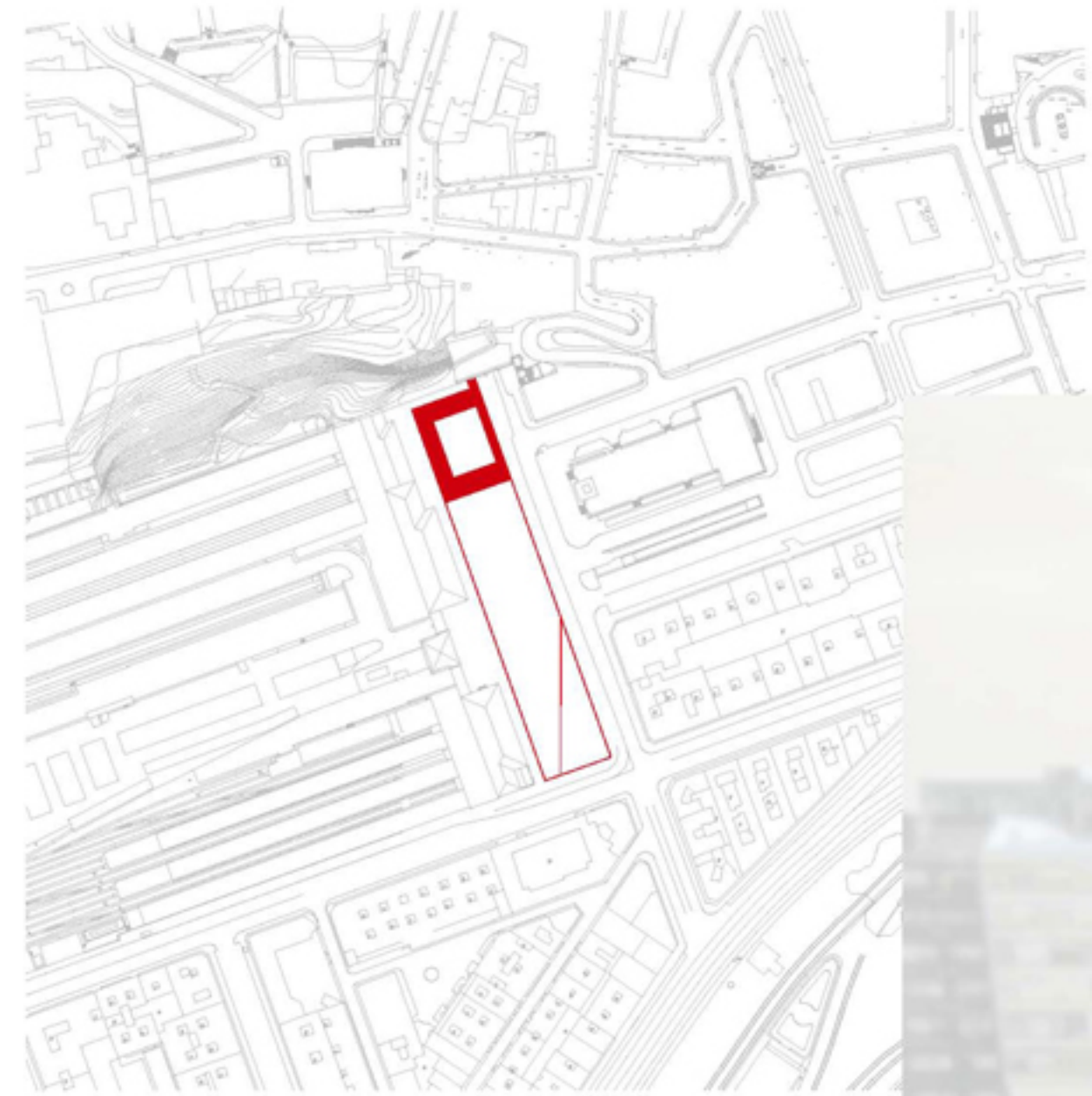


V CONCURSO CATEDRA HISPALYT CERAMICA PARA CONSTRUIR  
INTERVENCION EN LA PLAZA DE LA ESTACION DE FERROCARRIL DE SANTANDER



THE SITE

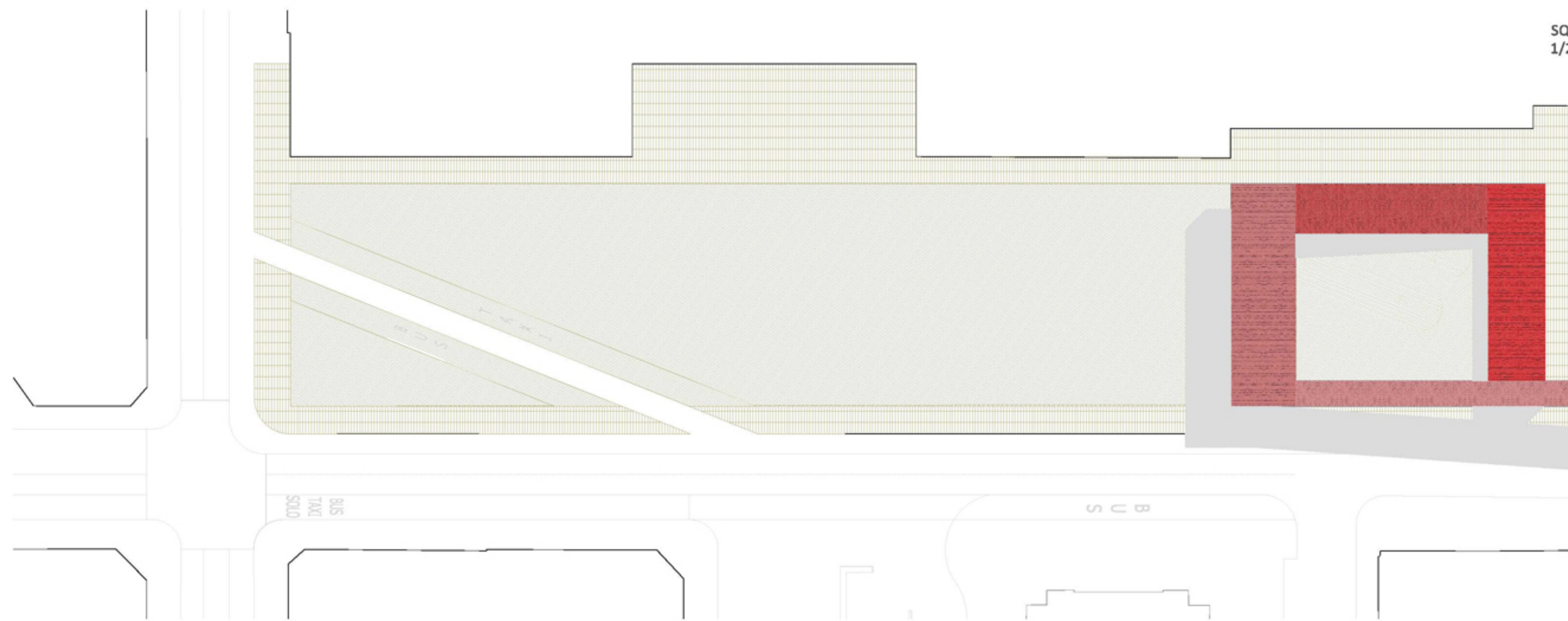
We are asked to re-build a public square in a place where we can only see disorder. The fact is the main concept of this site is the MOVEMENT and this is what we would like underline by means of a complex object, a sculpture, that organizes the square with its only presence. In that way we try to create a modern building which emphasizes the length of the railway station and generates a square full of life.

MOVEMENTS

The movement is the main idea of the project. We make a square where people can move with freedom and the building is another item that makes it possible, because it connects the lower level of the station with the upper level of the park. That way we design a dynamic structure that generates a promenade. The other gesture of our project is to create a diagonal roads where the vehicles can stop to take or leave the people. These diagonals produce the tension enough to fulfill the urban gap.



GENERAL VIEW

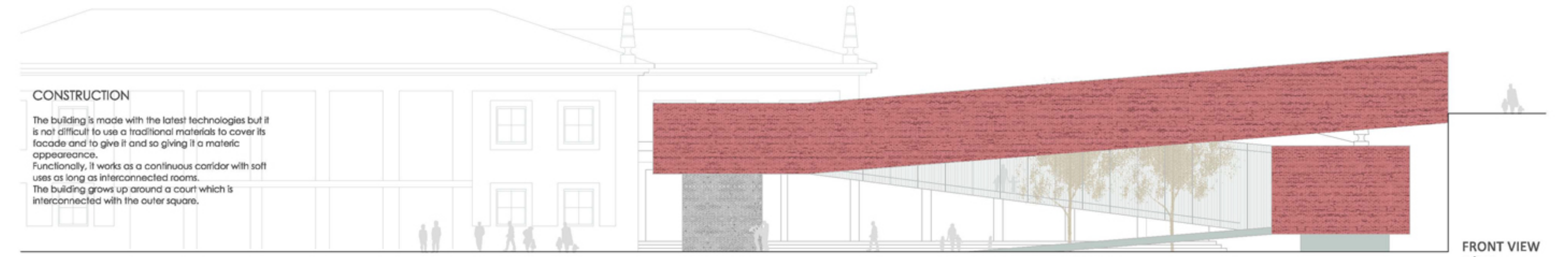


SQUARE PLAN  
1/250



SECTION 1  
1/250

V CONCURSO CATEDRA HISPALYT CERAMICA PARA CONSTRUIR  
INTERVENCION EN LA PLAZA DE LA ESTACION DE FERROCARRIL DE SANTANDER

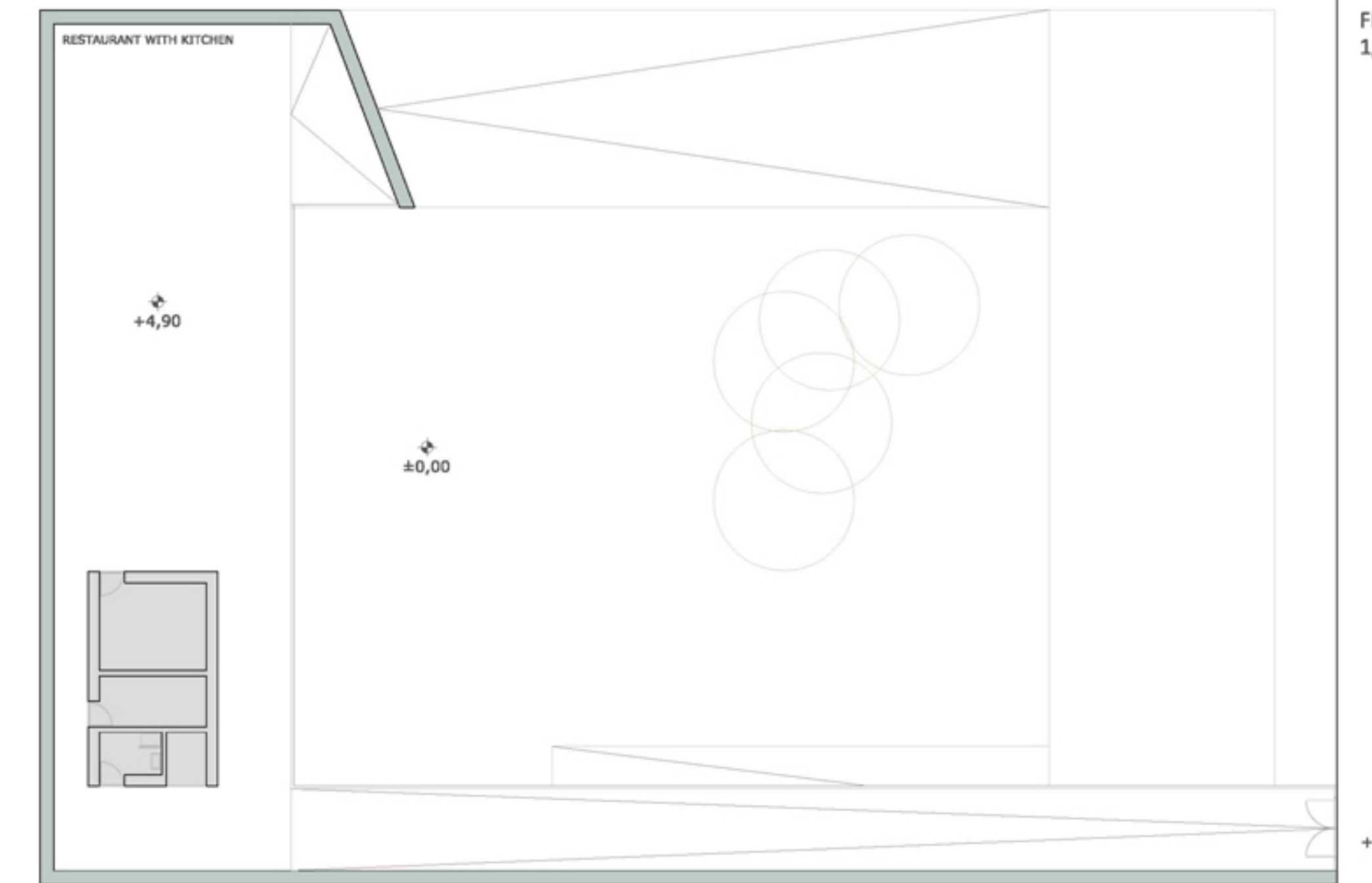
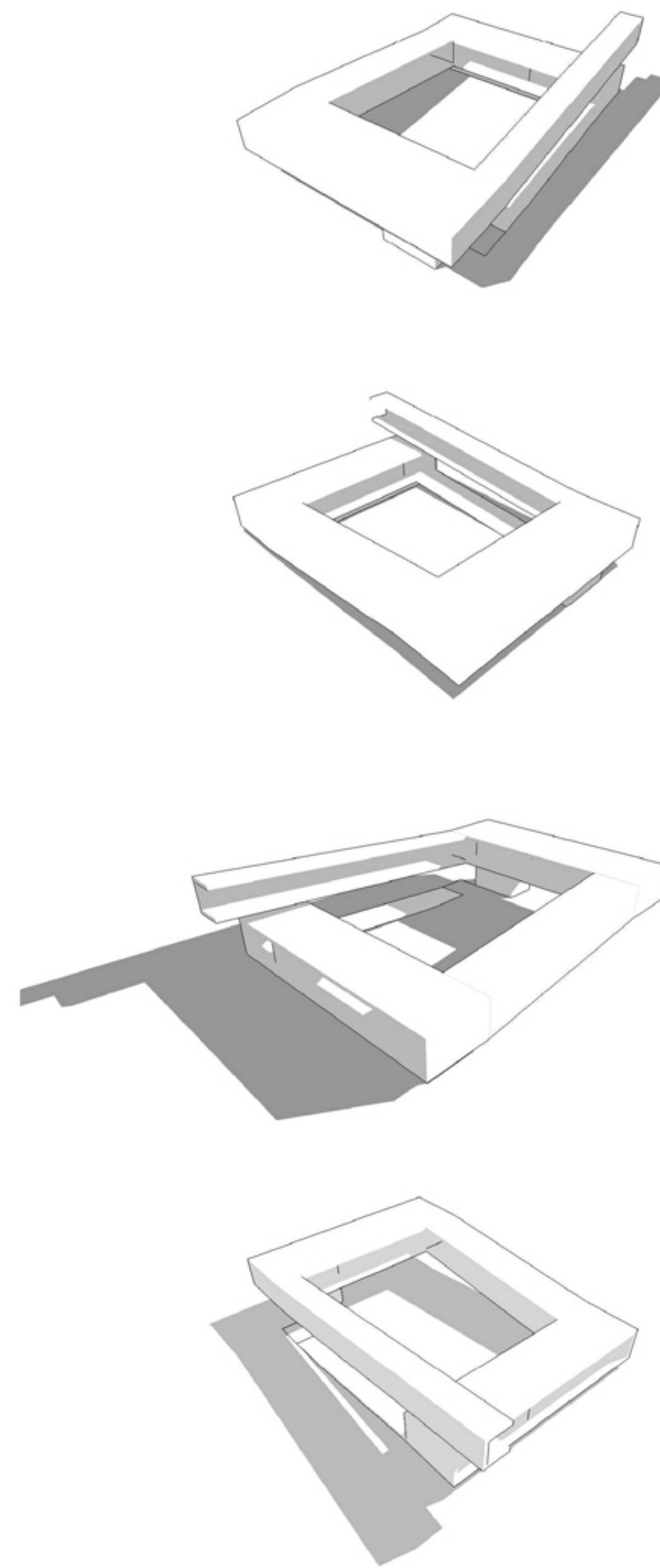


CONSTRUCTION

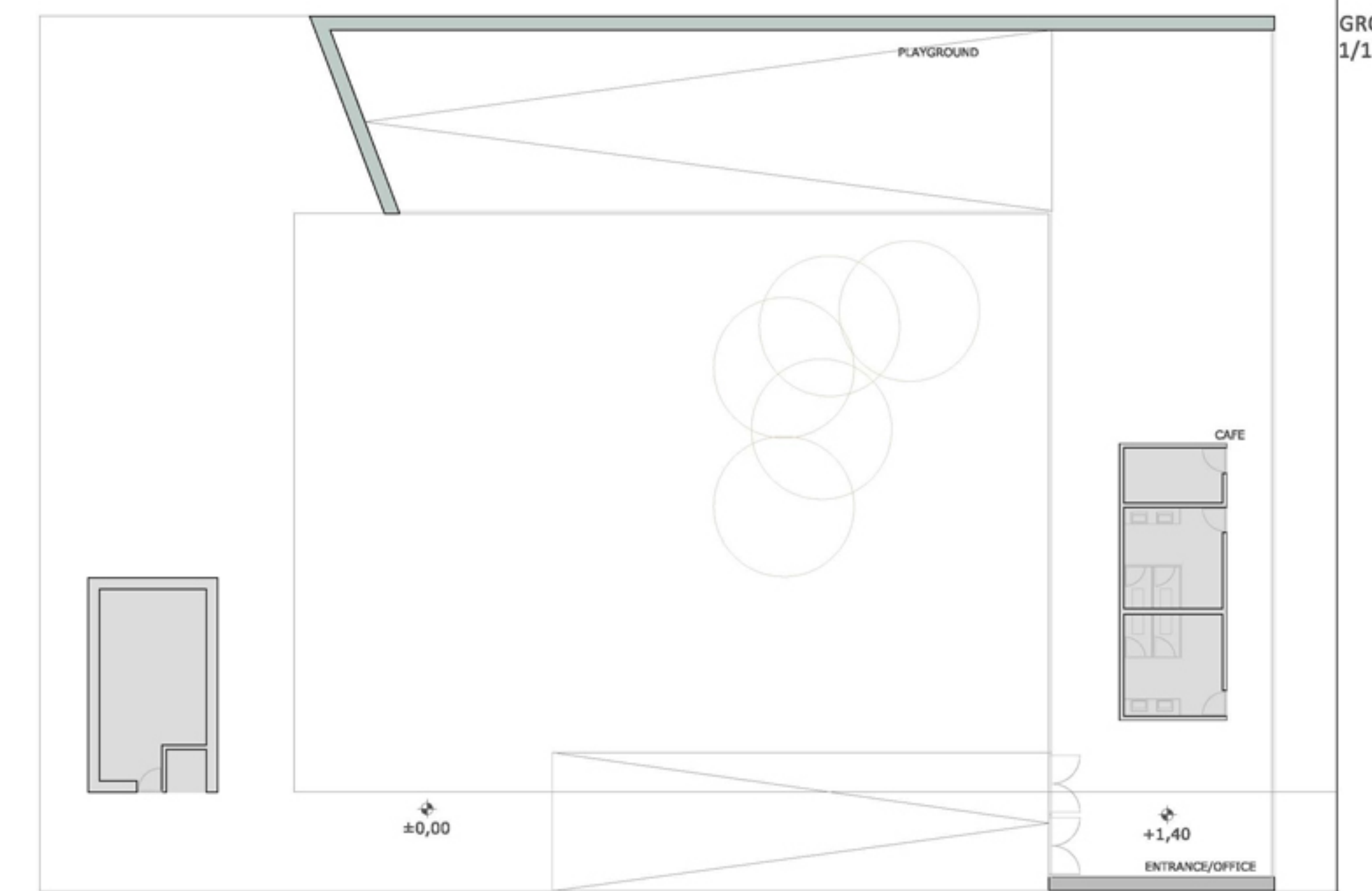
The building is made with the latest technologies but it is not difficult to use a traditional materials to cover its facade and to give it and so giving it a material appearance. Functionally, it works as a continuous corridor with soft use as long as interconnected rooms. The building grows up around a court which is interconnected with the outer square.

FRONT VIEW  
1/150

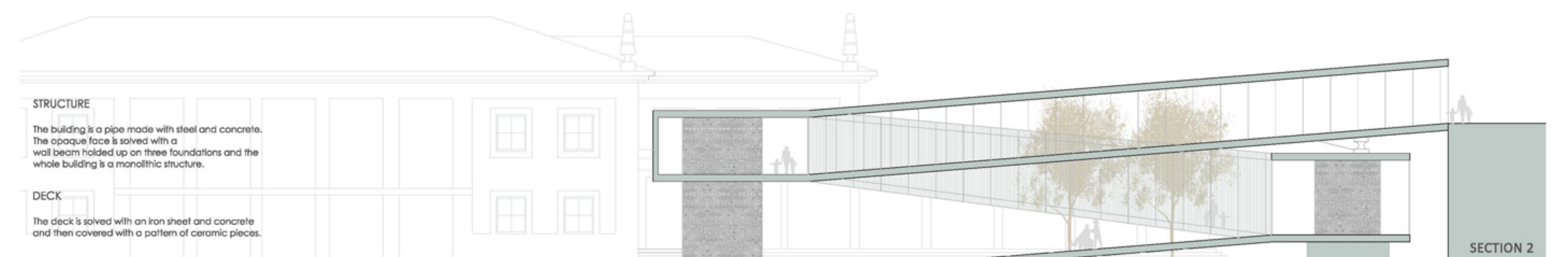
3D MODEL



FIRST LEVEL  
1/150



GROUND FLOOR  
1/150



STRUCTURE

The building is a pipe made with steel and concrete. The opaque face is solved with a wall beam hollid up on three foundations and the whole building is a monolithic structure.

DECK

The deck is solved with an iron sheet and concrete and then covered with a pattern of ceramic pieces.

SECTION 2  
1/150