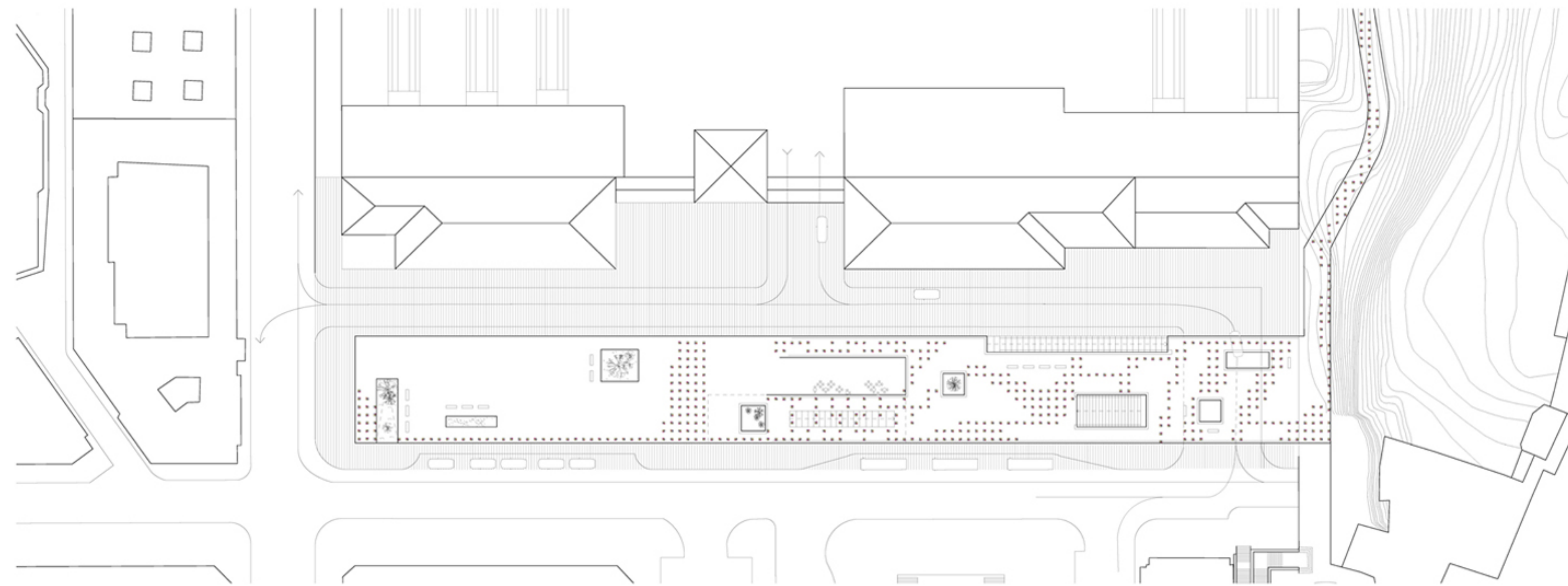


# no-stop landscape



site plan 1:500

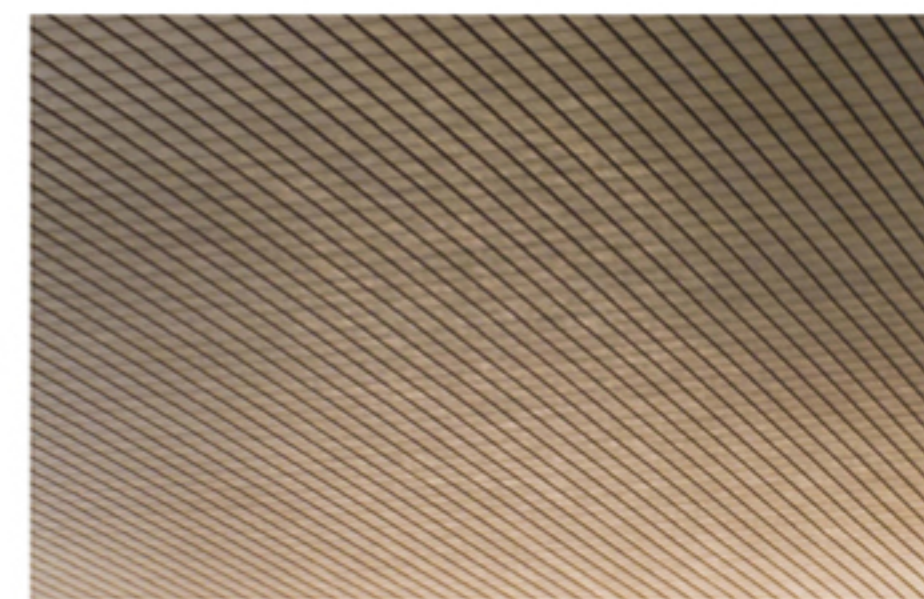
„No Stop Landscape“ is a proposal for continuity, connection as well as zonation of space.

Looking at the area beyond the immediate site; setting the Santander train station in its urban context, one finds a 1,5 kilometers long green belt stretching alongside the railway lines with a unique topography that also separates two parts of the city. In its current state, the square in front of the train station has no shape, no direction and no continuity.

The strong gesture of a carpet like slim slab develops a strong character for the area and creates an abstract continuation of the landscape above and an ordered, functioning situation below (concentrating all car traffic on one circular movement). By connecting this park area and the neighbouring areas on to this busy traffic point we additionally intent to open a new passage through the city.

The use of ceramic material creates a warm atmosphere and strengthens the perception of topography and scale. A pattern of glazed bricks covers the upper surface and follows the idea of a carpet which is often associated with

The focus in the use of brick and other ceramic material lies in the essence and possibilities as a innovative and proven cladding module as well as a concrete formwork. With the main supporting material being reinforced concrete, the versatility of ceramic materials as a long lasting and beautiful surface is being tested.



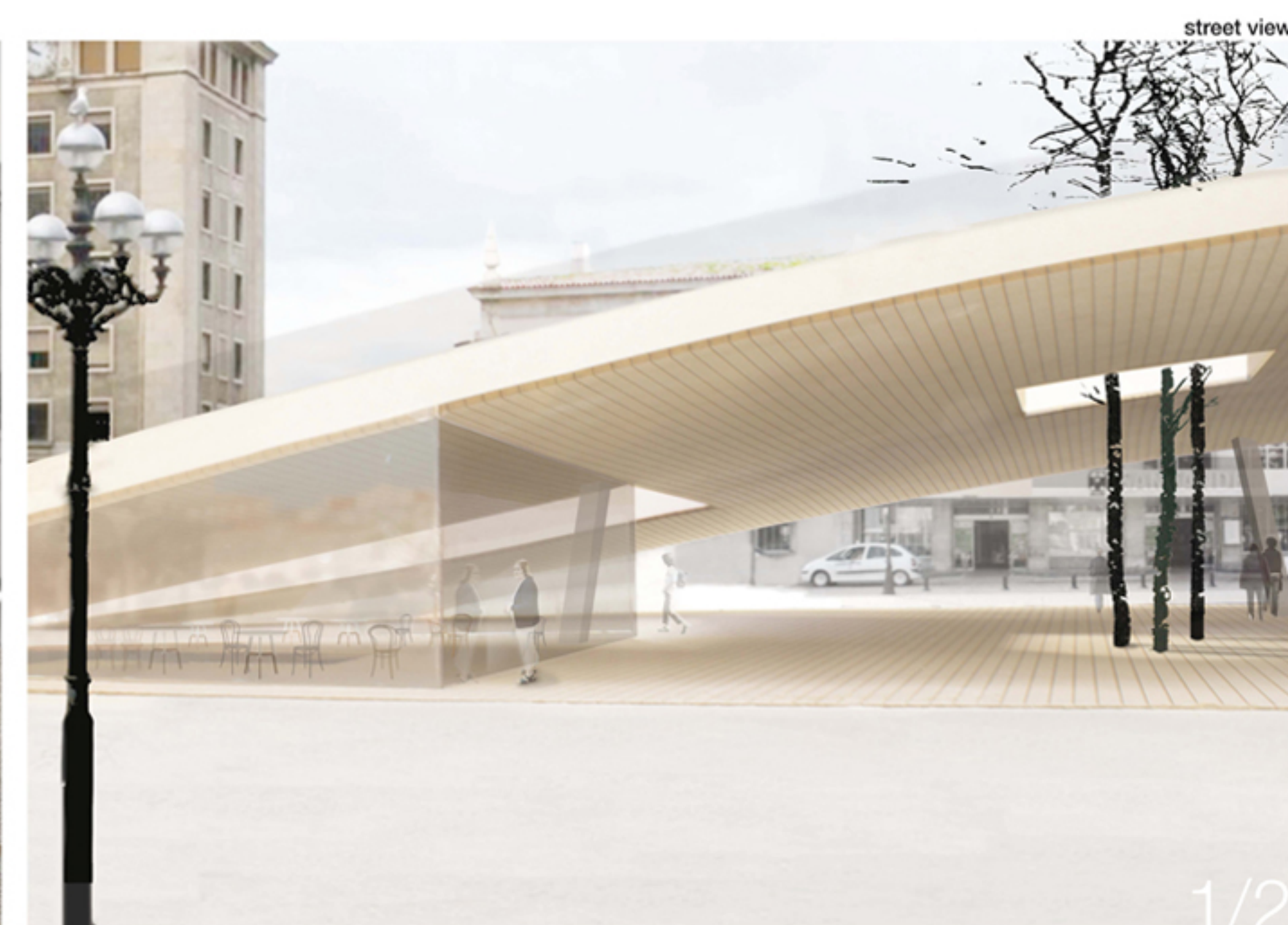
The cafeteria is positioned in the center of the plaza as a turning point between the three main zones: 1. The urban square as a open space in front of the FEVE train station 2. The traffic zone, including the bus station in front of RENFE and car passage and 3. the „recreation“ area lifted above the speed and noise of the traffic and leading to the big park.



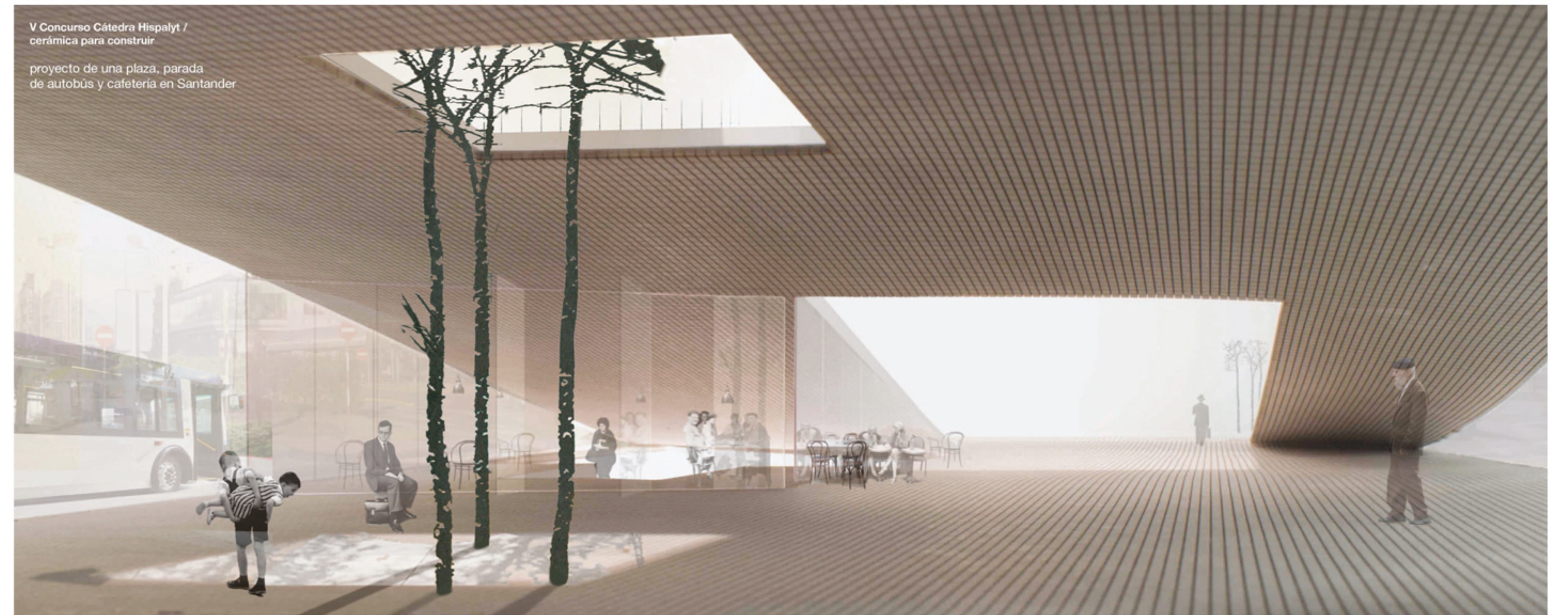
The ceramic slab is perforated with patios, stairs and seating areas which are reacting to the needs of traffic circulation and surrounding conditions by creating a series of framed spaces as well as main traffic routes for pedestrians.



DL394



1/2



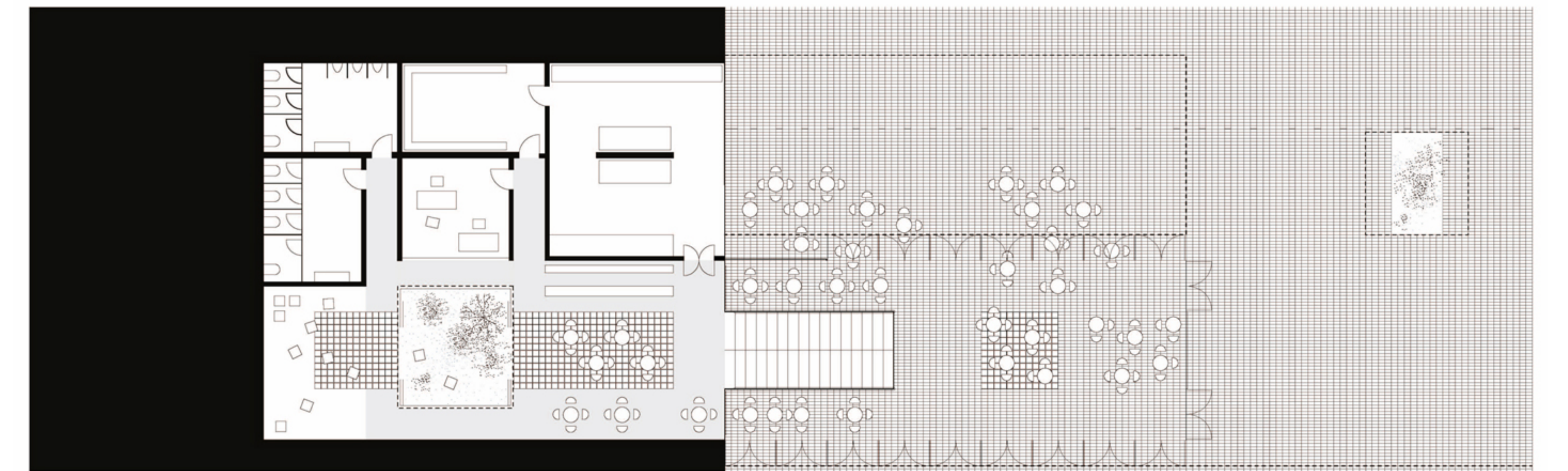
view of roofed bus station and cafeteria



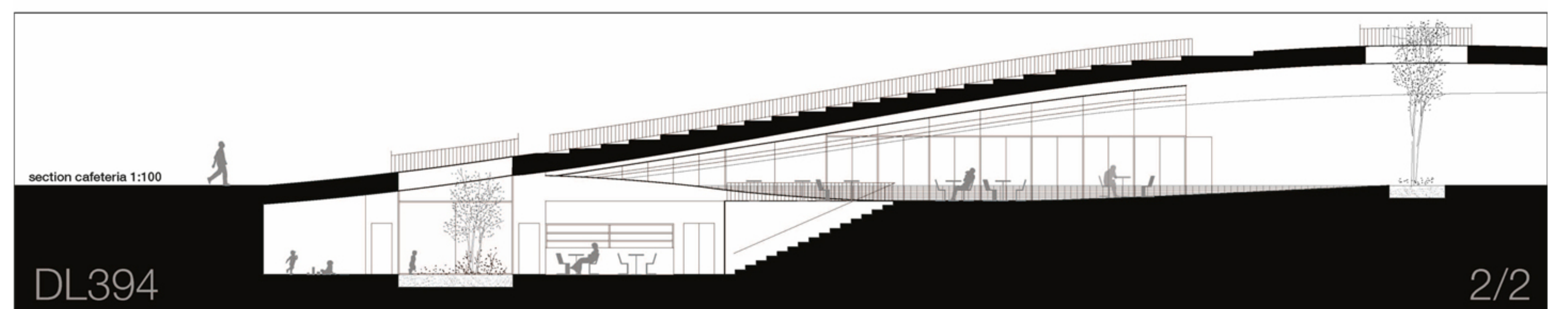
section 1:500



elevation 1:500



plan 1:100



section cafeteria 1:100

DL394

2/2