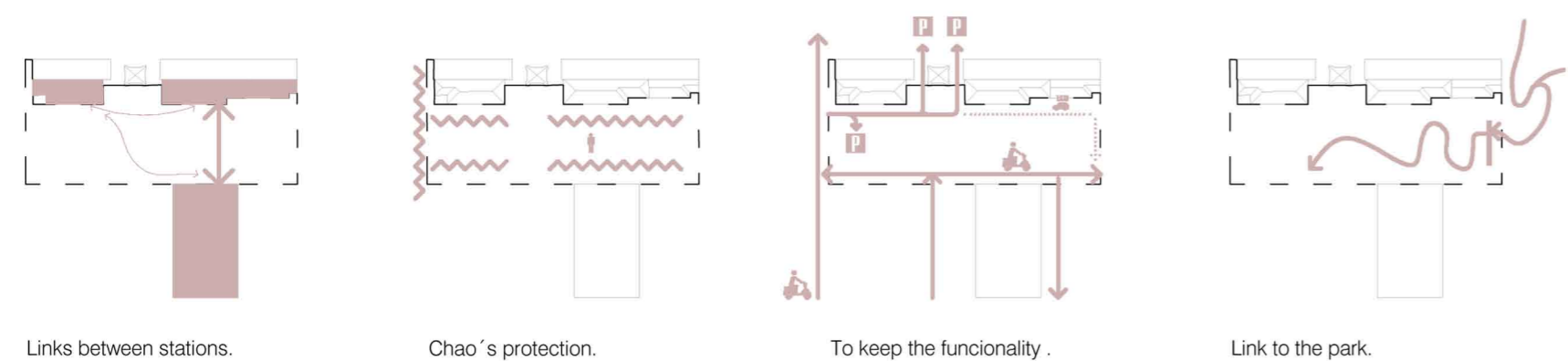


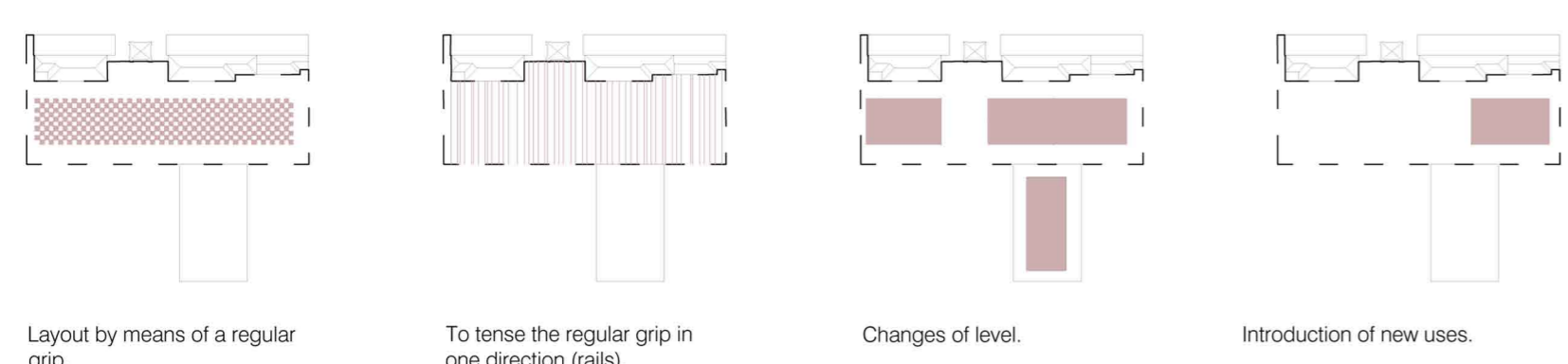
# V CONCURSO CÁTEDRA HISPALYT / CERÁMICA PARA CONSTRUIR

## Proyecto de una plaza, parada de autobús y cafetería en santander

### A. OBJETIVES



### B. STRATEGIES



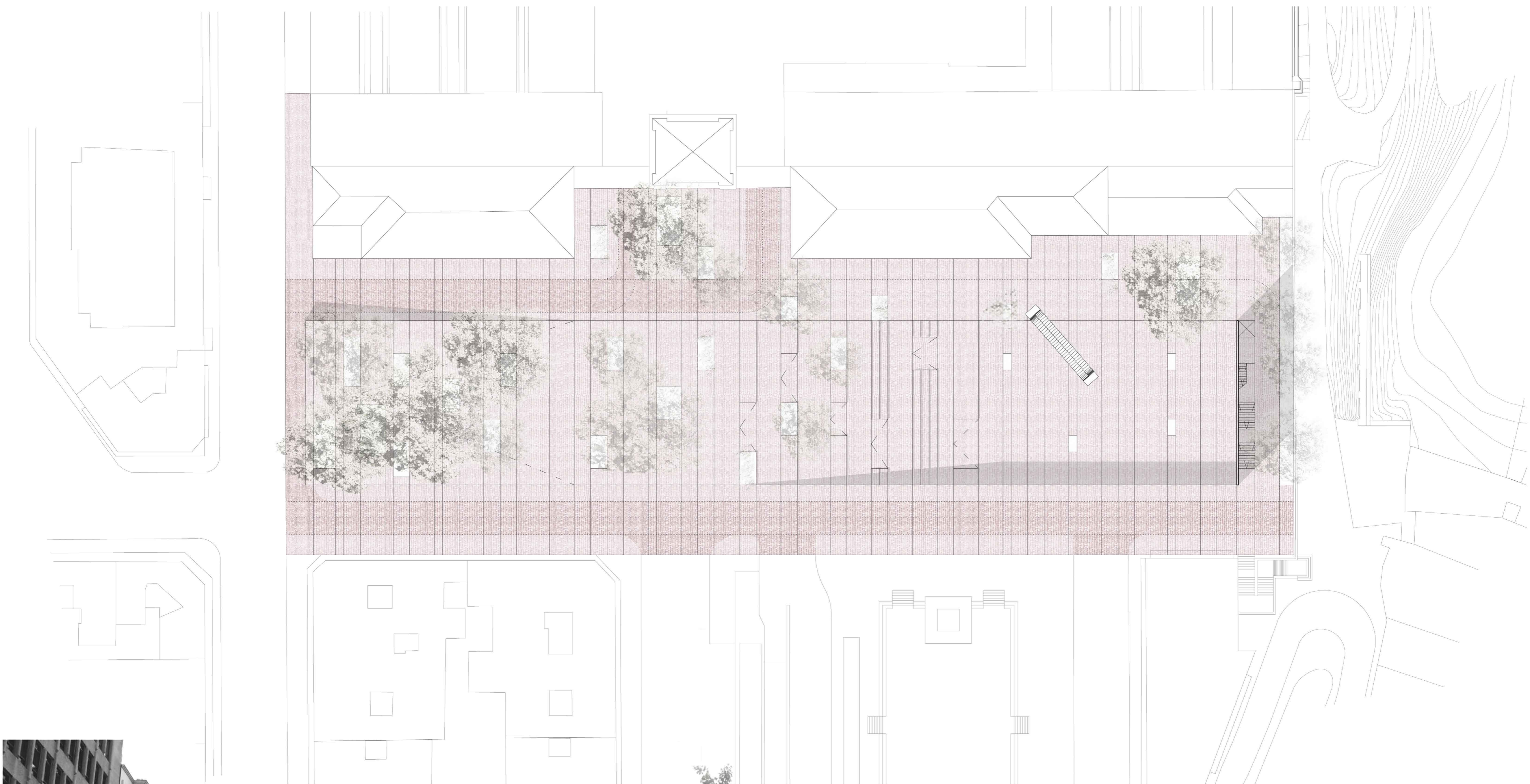
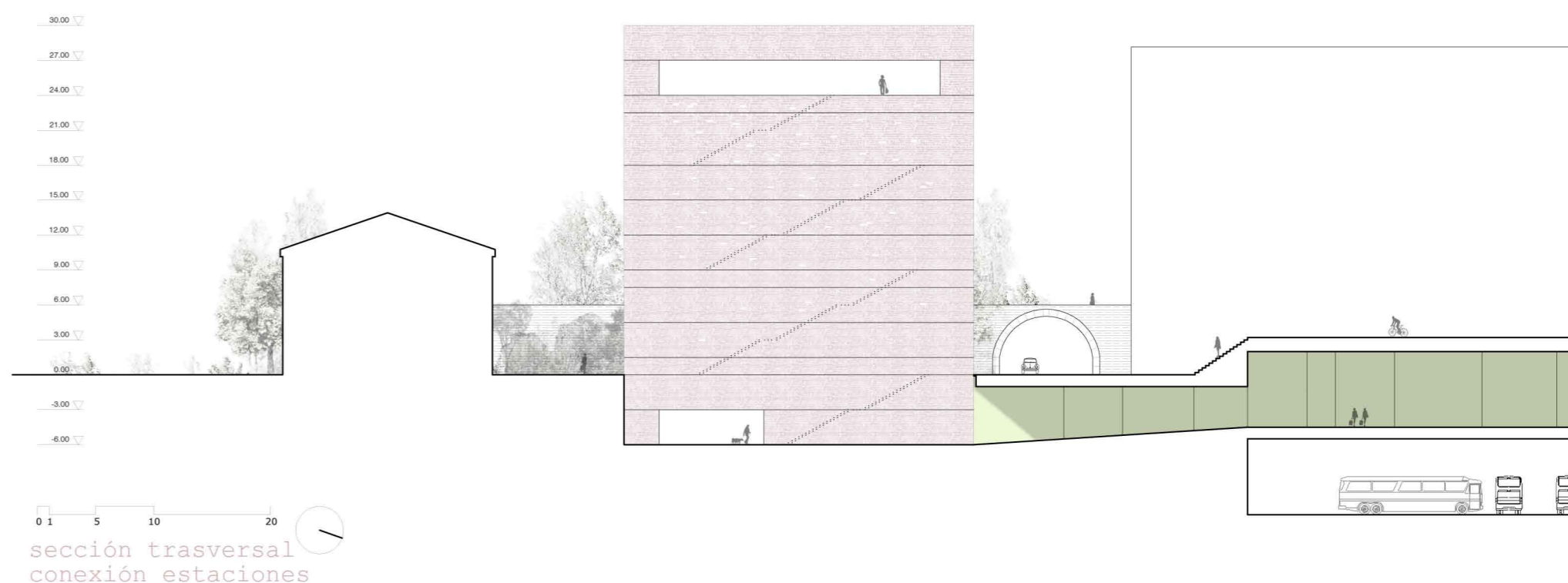
### C. PROPOSAL



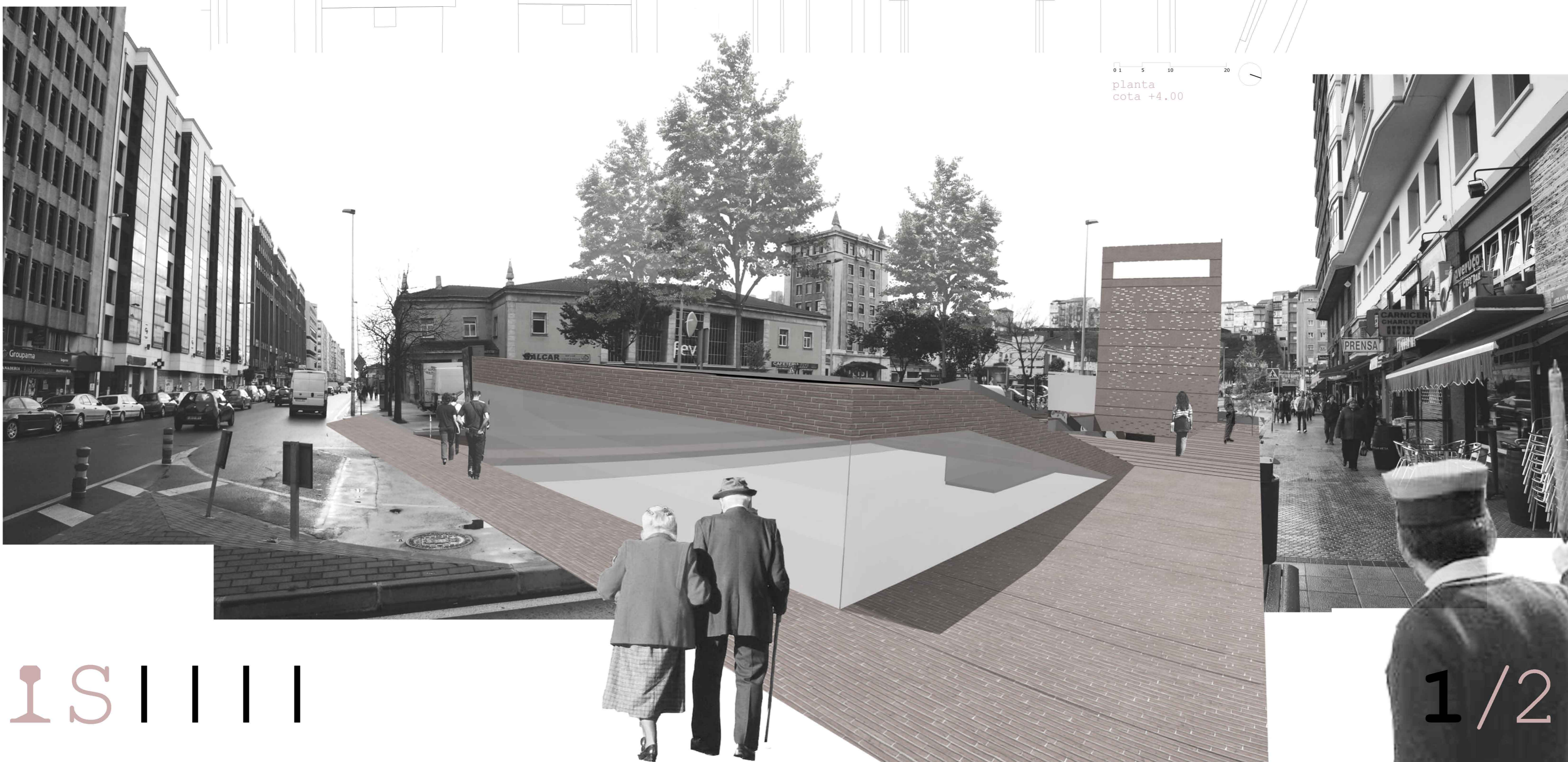
In the middle of the chaos of the Station's square, we propose a solution with **only one gesture**. One movement that include the bus stop and the coffee zone. One gesture that permits to cut the square in three different levels:

- 1\_ down level where people can relax out of the transport's visuals.
- 2\_  $\pm 0.00$  level dedicated to resolve the functionality of the site.
- 3\_ up level where we propose a Connection with the existing park and protection for the rest of the project.

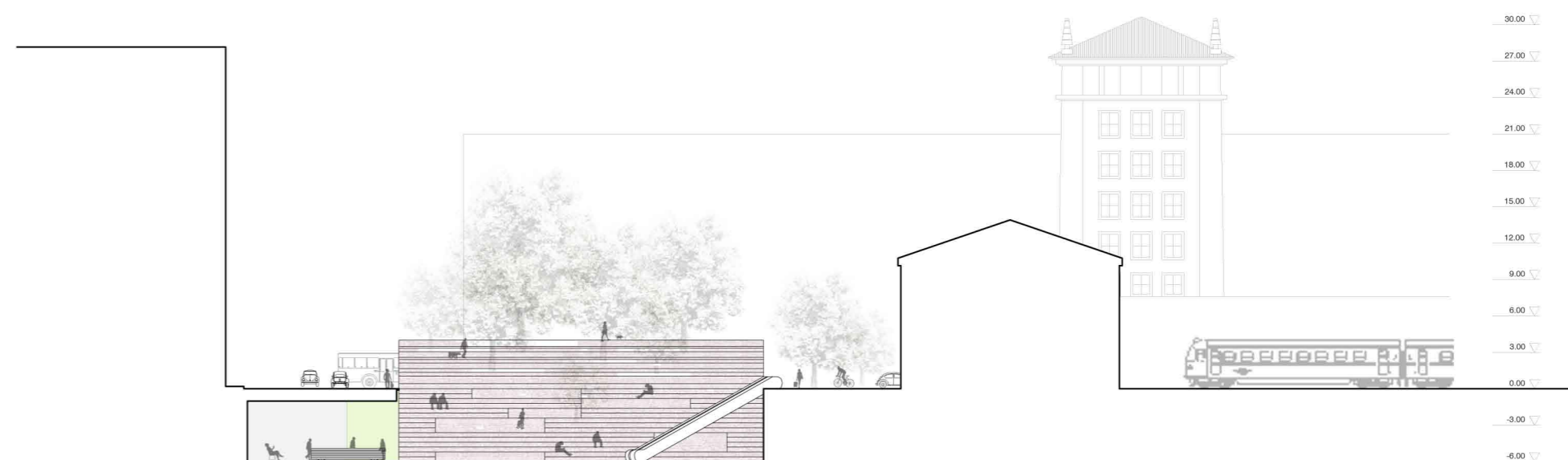
Years ago, trains crossed the renfe's tower passing by the site. We design a grip based on the old rails and take it another time to create a new type of coffee, where some parts, like bar zone or the department store, could move like a carriage by the rails.



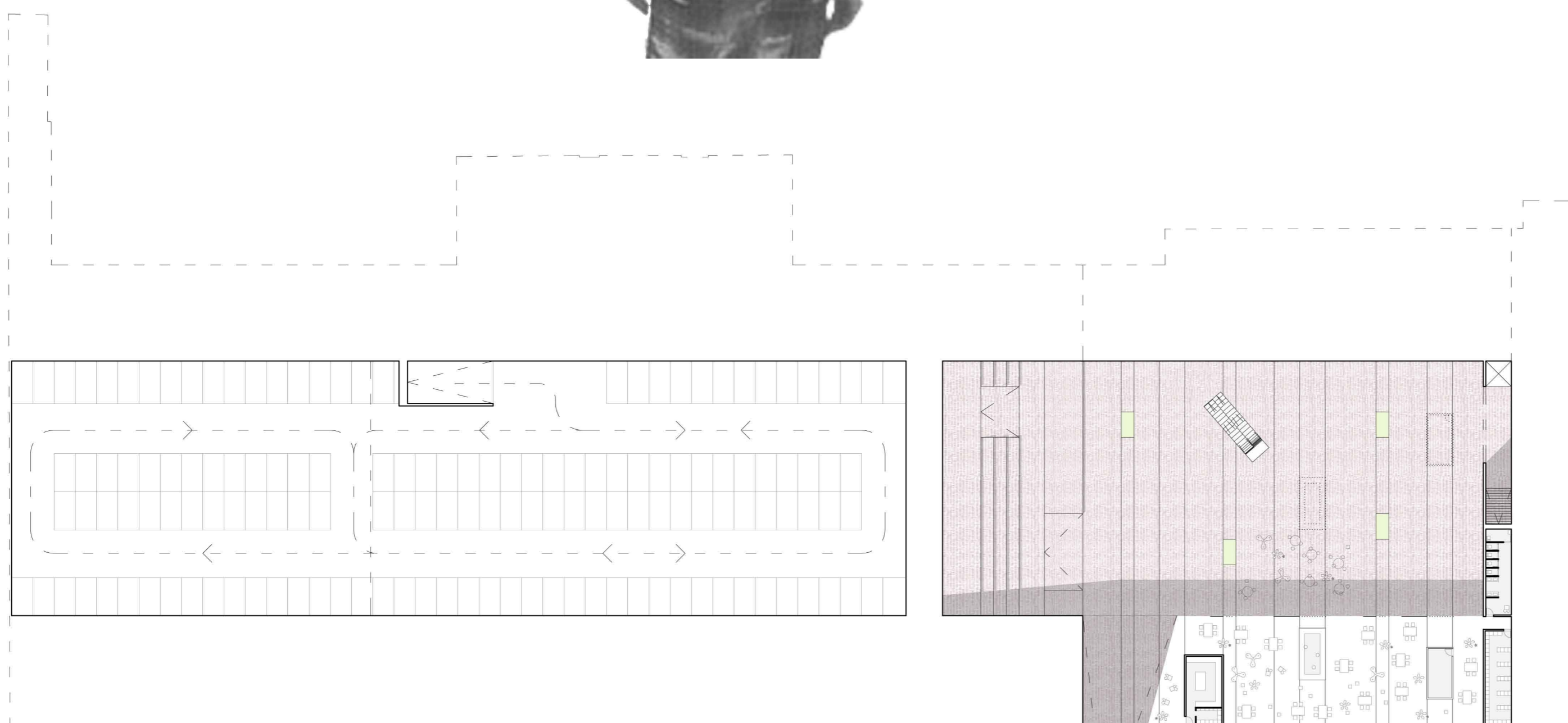
planta  
cota +4.00



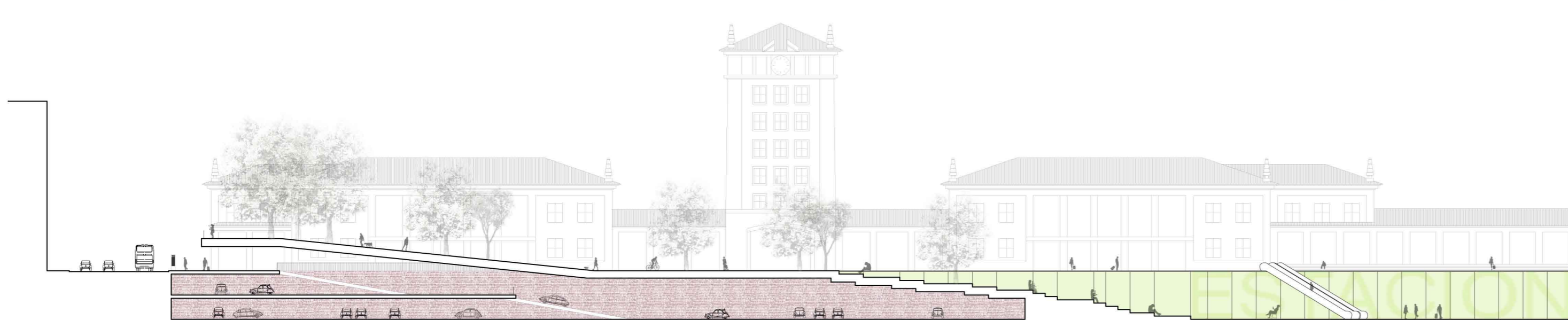




sección transversal  
cafetería



planta cafetería  
cota -6.00



sección longitudinal

